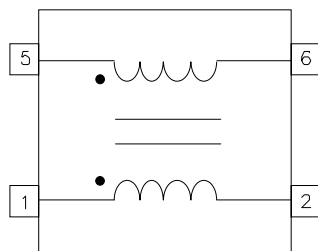


# SCR Trigger and Control Transformers

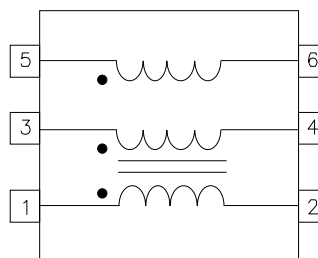
High E-T Product for long Pulse Width Applications  
 Low Interwinding Capacitance  
 Hi-Pot Test Voltages 1600 to 2400 Vrms  
 Wide Variety of Inductances and Winding Configurations

Electrical Specifications at 25°C

2 Winding Schematic Diagram

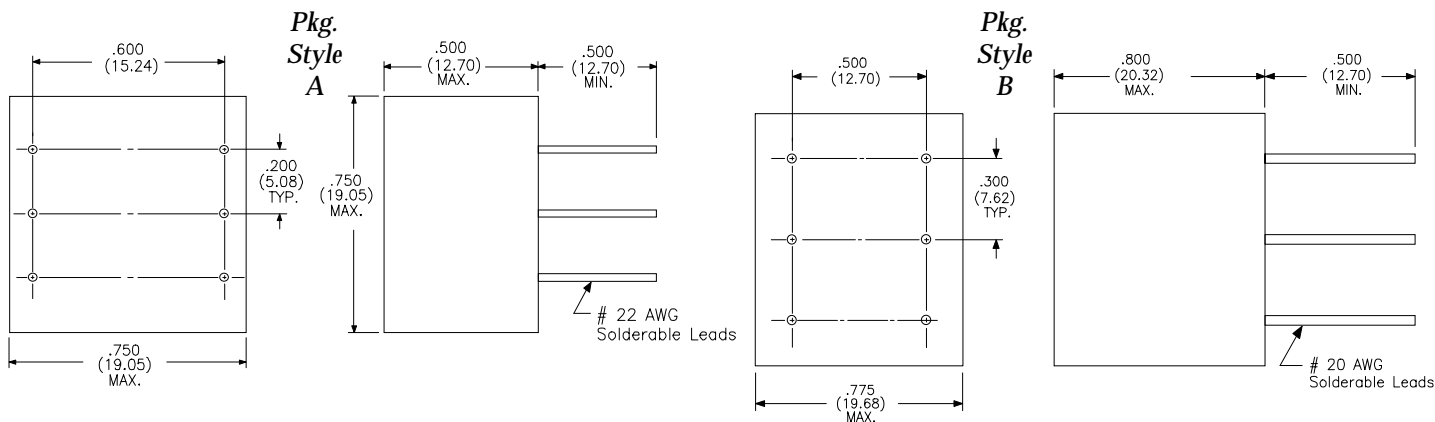


3 Winding Schematic Diagram



Part Number	L min. (mH)	Turns Ratio $\pm 10\%$	E-T min. (V- $\mu$ S)	$C_{www}$ max. (pF)	$L_L$ max. ( $\mu$ H)	$DCR_{Pri}$ max. ( $\Omega$ )	$DCR_{Sec}$ max. ( $\Omega$ )	Hi-Pot min. ( $V_{RMS}$ )	Pkg/Style
T-20000	0.20	1:1	180	24	3.2	1.4	1.5	1600	A
T-20001	1.00	1:1	360	30	15.0	2.8	3.1	1600	A
T-20002	5.00	1:1	866	36	64.0	6.0	7.5	1600	A
T-20003	0.20	2:1	180	24	5.0	1.4	0.9	1600	A
T-20004	1.00	2:1	360	30	13.0	2.8	1.8	1600	A
T-20005	5.00	2:1	866	36	65.0	6.0	3.6	1600	A
T-20006	0.20	1:1:1	180	30	5.0	1.4	1.5	1600	A
T-20007	1.00	1:1:1	360	36	12.0	2.8	3.6	1600	A
T-20008	5.00	1:1:1	866	42	80.0	6.0	7.2	1600	A
T-20009	0.20	2:1:1	180	30	4.1	1.4	1.0	1600	A
T-20010	1.00	2:1:1	360	36	30.0	2.8	2.0	1600	A
T-20011	5.00	2:1:1	866	42	80.0	6.0	3.8	1600	A
T-20012	0.20	1:1	290	30	6.2	1.4	1.5	2400	B
T-20013	1.00	1:1	700	36	26.0	3.0	3.2	2400	B
T-20014	5.00	1:1	1500	42	130.0	6.3	7.0	2400	B
T-20015	0.20	2:1	290	30	8.9	1.4	1.0	2400	B
T-20016	1.00	2:1	700	36	24.0	3.0	2.0	2400	B
T-20017	5.00	2:1	1500	42	125.0	6.3	4.0	2400	B
T-20018	0.20	1:1:1	290	34	4.7	1.4	1.5	2400	B
T-20019	1.00	1:1:1	700	40	25.0	3.0	3.3	2400	B
T-20020	5.00	1:1:1	1500	46	174.0	6.3	7.5	2400	B
T-20021	0.20	2:1:1	290	34	6.0	1.4	1.0	2400	B
T-20022	1.00	2:1:1	700	40	27.0	3.0	2.0	2400	B
T-20023	5.00	2:1:1	1500	46	160.0	6.3	4.0	2400	B
T-20026	5.00	1:1	2000	3500	25.0	18.0	18.0	1600	B
T-20027	1.00	1:1	2000	2000	12.0	8.0	8.0	1600	B
T-20028	0.20	1:1	2000	800	3.0	1.5	1.5	1600	B
T-20029	1.00	2:1	2000	1300	15.0	10.0	2.0	1600	B
T-20030	5.00	5:1	2000	400	1500.0	19.0	3.0	1600	B
T-20031	5.00	1:1:1	2000	3500	50.0	27.0	27.0	1600	B
T-20032	1.00	1:1:1	2000	2000	12.0	10.0	10.0	1600	B
T-20033	0.20	1:1:1	2000	800	4.0	2.0	2.0	1600	B
T-20034	1.00	2:1:1	2000	1300	15.0	10.0	2.0	1600	B
T-20035	5.00	5:1:1	2000	400	1000.0	20.0	4.0	1600	B

Physical Dimensions in Inches (mm). Note: For 2 Winding configuration, only 4 corner leads are used.



Specifications subject to change without notice.

For other values & Custom Designs, contact factory.

SCRTRIG - 7/97