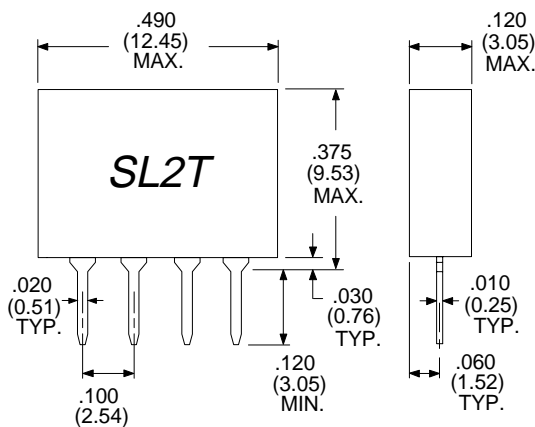
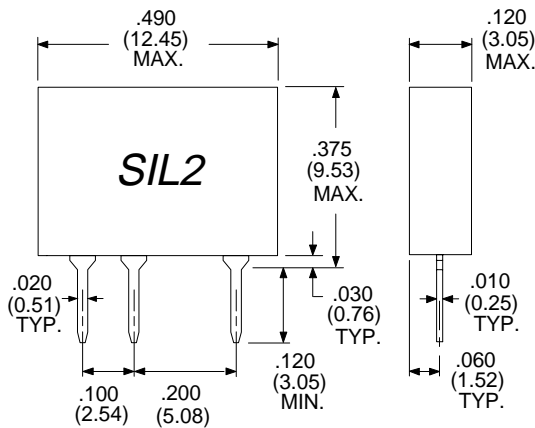


SIL2 & SL2T Series Mini-SIP Passive Delay Lines

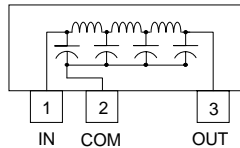
- Small / Thin SIP Package
- Impedances: 50 - 55 - 75 - 93 - 100 - 200 Ω
- Stable Delay vs. Temperature: 100 ppm/ $^{\circ}$ C
- Operating Temperature Range -55 $^{\circ}$ C to +125 $^{\circ}$ C

Single Output
Part Number Examples:
SIL2-2-50 = 2 ns 50 Ω
SIL-2.5-75 = 2.5 ns 75 Ω
SIL2-12-20 = 12 ns 200 Ω

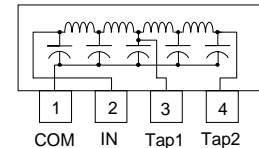
Two Tap
Part Number Examples:
SL2T2-50 = 2 ns (1ns Tap) 50 Ω
SL2T1.5-55 = 2.5 ns (1.25ns Tap) 55 Ω
SL2T12-10 = 12 ns (6ns Tap) 100 Ω



SIL2 Single Output Schematic



SL2T 2 Tap Schematic

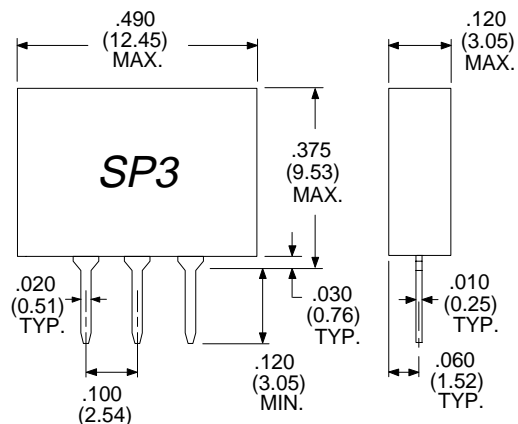


Electrical Specifications at 25 $^{\circ}$ C *

Delay (ns)	Rise Time 20% - 80% max. (ns)	DCR max. (Ohms)	Single Output P/N Zo: XX= 50, 55, 75, 93, 10, 20	With 50% Tap P/N Zo: XX= 50, 55, 75, 93, 10, 20
1.0 \pm .20	1.6	.20	SIL 2- 1 - XX	SL2T 1 - XX
1.5 \pm .20	1.6	.30	SIL - 1.5 - XX	SL2T 1.5 - XX
2.0 \pm .20	1.6	.40	SIL 2- 2 - XX	SL2T 2 - XX
2.5 \pm .20	1.6	.50	SIL - 2.5 - XX	SL2T 2.5 - XX
3.0 \pm .20	1.7	.60	SIL 2- 3 - XX	SL2T 3 - XX
3.5 \pm .20	1.7	.60	SIL - 3.5 - XX	SL2T 3.5 - XX
4.0 \pm .20	1.7	.70	SIL 2- 4 - XX	SL2T 4 - XX
4.5 \pm .20	1.7	.70	SIL - 4.5 - XX	SL2T 4.5 - XX
5.0 \pm .25	1.8	.80	SIL 2- 5 - XX	SL2T 5 - XX
6.0 \pm .30	2.0	.85	SIL 2- 6 - XX	SL2T 6 - XX
7.0 \pm .30	2.2	.90	SIL 2- 7 - XX	SL2T 7 - XX
7.5 \pm .30	2.4	.95	SIL - 7.5 - XX	SL2T 7.5 - XX
8.0 \pm .30	2.4	.95	SIL 2- 8 - XX	SL2T 8 - XX
10 \pm .30	2.8	1.20	SIL 2- 10 - XX	SL2T 10 - XX
11 \pm .40	3.0	1.40	SIL 2- 11 - XX	SL2T 11 - XX
12 \pm .50	3.2	1.50	SIL 2- 12 - XX	SL2T 12 - XX
13 \pm .60	3.4	1.60	SIL 2- 13 - XX	SL2T 13 - XX
14 \pm .70	3.6	1.60	SIL 2- 14 - XX	SL2T 14 - XX
15 \pm .70	3.8	1.70	SIL 2- 15 - XX	SL2T 15 - XX
16 \pm .80	4.0	1.80	SIL 2- 16 - XX	SL2T 16 - XX
20 \pm 1.0	4.8	2.00	SIL 2- 20 - XX	SL2T 20 - XX

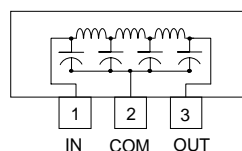
* Refer to Operating Specifications for Passive Delay Lines page 2.

SP3 Series Mini-SIP Passive Delay Lines



Part Number Examples:
SP3-2-50 = 2 ns 50 Ω
SP3-2.5-93 = 2.5 ns 93 Ω
SP3-5-10 = 5 ns 100 Ω
SP3-10-20 = 10 ns 200 Ω

SP3 Style Schematic



Electrical Specifications at 25 $^{\circ}$ C *

Delay (ns)	Rise Time 20% - 80% max. (ns)	DCR max. (Ohms)	Part Number Zo: XX= 50, 55, 75, 93, 10 or 20
1.0 \pm .20	1.6	.20	SP3-1 - XX
1.5 \pm .20	1.6	.30	SP3-1.5 - XX
2.0 \pm .20	1.6	.40	SP3-2 - XX
2.5 \pm .20	1.6	.50	SP3-2.5 - XX
3.0 \pm .20	1.7	.60	SP3-3 - XX
3.5 \pm .20	1.7	.60	SP3-3.5 - XX
4.0 \pm .20	1.7	.70	SP3-4 - XX
4.5 \pm .20	1.7	.70	SP3-4.5 - XX
5.0 \pm .25	1.8	.80	SP3-5 - XX
6.0 \pm .30	2.0	.85	SP3-6 - XX
7.0 \pm .30	2.2	.90	SP3-7 - XX
7.5 \pm .30	2.4	.95	SP3-7.5 - XX
8.0 \pm .30	2.4	.95	SP3-8 - XX
10 \pm .30	2.8	1.20	SP3-10 - XX

* Refer to Operating Specifications for Passive Delay Lines page 2.