

# ACDM Series Advanced CMOS Logic Buffered 5-Tap Delay Modules

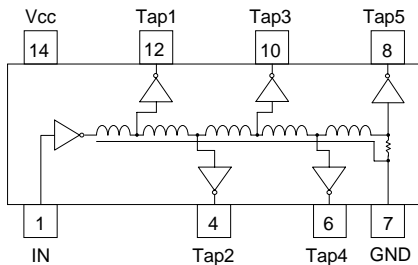
74ACT type input is compatible with TTL    Outputs can Source / Sink 24 mA

- Low Profile 14-Pin Package  
Two Surface Mount Versions
- Available in Low Voltage CMOS  
74LVC Logic version LVIDM Series
- 5 Equal Delay Taps
- Operating Temp. -40°C to +85°C

## Electrical Specifications at 25°C

74ACT 5 Tap 14-pin DIP P/N	Tap Delay Tolerances +/- 5% or 2ns (+/- 1ns <13ns)					Tap-to-Tap (ns)
	Tap 1	Tap 2	Tap 3	Tap 4	Total - Tap 5	
ACDM-30	6.0	12.0	18.0	24.0	30 ± 2.0	6 ± 2.0
ACDM-35	7.0	14.0	21.0	28.0	35 ± 2.0	7 ± 2.0
ACDM-40	8.0	16.0	24.0	32.0	40 ± 2.0	8 ± 2.0
ACDM-50	10.0	20.0	30.0	40.0	50 ± 2.5	10 ± 2.0
ACDM-60	12.0	24.0	36.0	48.0	60 ± 3.0	12 ± 2.0
ACDM-75	15.0	30.0	45.0	60.0	75 ± 3.75	15 ± 2.5
ACDM-80	16.0	32.0	48.0	64.0	80 ± 4.0	16 ± 3.0
ACDM-100	20.0	40.0	60.0	80.0	100 ± 5.0	20 ± 3.0
ACDM-125	25.0	50.0	75.0	100.0	125 ± 6.25	25 ± 3.0
ACDM-150	30.0	60.0	90.0	120.0	150 ± 7.5	30 ± 3.0
ACDM-200	40.0	80.0	120.0	160.0	200 ± 10.0	40 ± 4.0
ACDM-250	50.0	100.0	150.0	200.0	250 ± 12.5	50 ± 5.0

ACDM 14-Pin Schematic

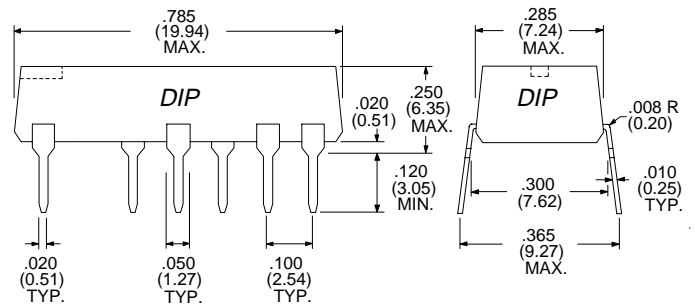


Dimensions in Inches (mm)

## TEST CONDITIONS -- Advanced CMOS, 74ACT

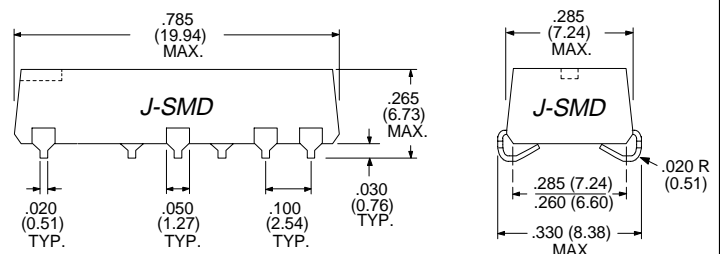
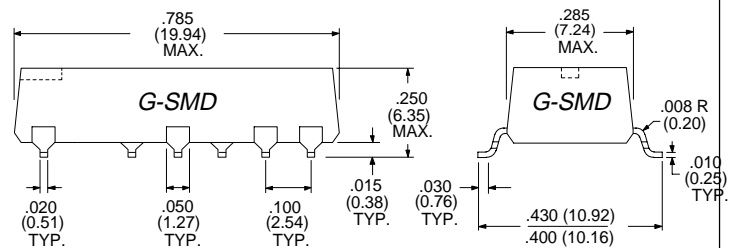
V<sub>CC</sub> Supply Voltage ..... 5.00VDC  
 Input Pulse Voltage ..... 3.00V  
 Input Pulse Rise Time ..... 3.0 ns max.  
 Input Pulse Width / Period ..... 1000 / 2000 ns

1. Measurements made at 25°C
2. Delay Times measured at 1.50V level of input to +2.50V level of Output on leading edge.
3. Rise Times measured from 10% to 90% points.
4. 50pf probe and fixture load on output under test.



## OPERATING SPECIFICATIONS

Supply Voltage, V<sub>CC</sub> ..... 5.00 ± 0.50 VDC  
 Supply Current, I<sub>CC</sub> ..... 14 mA typ., 28 mA max.  
 I<sub>CCH</sub>, V<sub>IN</sub> = V<sub>CC</sub>, V<sub>CC</sub> = 5.5V ..... 40 μA typ.  
 I<sub>CCL</sub>, V<sub>IN</sub> = 0V, V<sub>CC</sub> = 5.5V ..... 25 mA typ.  
 Logic "1" Input: V<sub>IH</sub> ..... 2.00 V min., 5.50V max.  
 Logic "0" Input: V<sub>IL</sub> ..... 0.80 V max.  
 Logic "1" Voltage Out, V<sub>OH</sub> ..... 3.8 V min.  
 Logic "0" Voltage Out, V<sub>OL</sub> ..... 0.44 V max.  
 Max. Input Current, I<sub>IN</sub> ..... ± 1.0 μA  
 Minimum Input Pulse Width ..... 40% of Delay min.  
 Operating Temperature Range ..... -40° to +85°C  
 Storage Temperature Range ..... -65° to +150°C



## P/N Description

**ACDM - XXX X**

74ACT Buffered 5 Tap Delay  
 Molded Package Series:

14-pin DIP: ACDM

Total Delay in nanoseconds (ns)

Lead Style: Blank = Thru-hole  
 G = "Gull Wing" SMD  
 J = "J" Bend SMD

Examples: ACDM-25G = 50ns (10ns / tap) 74ACT, 14-Pin G-SMD

ACDM-100 = 100ns (20ns / tap) 74ACT, 14-Pin DIP

Specifications subject to change without notice.

For other values & Custom Designs, contact factory.

ACDM 9901