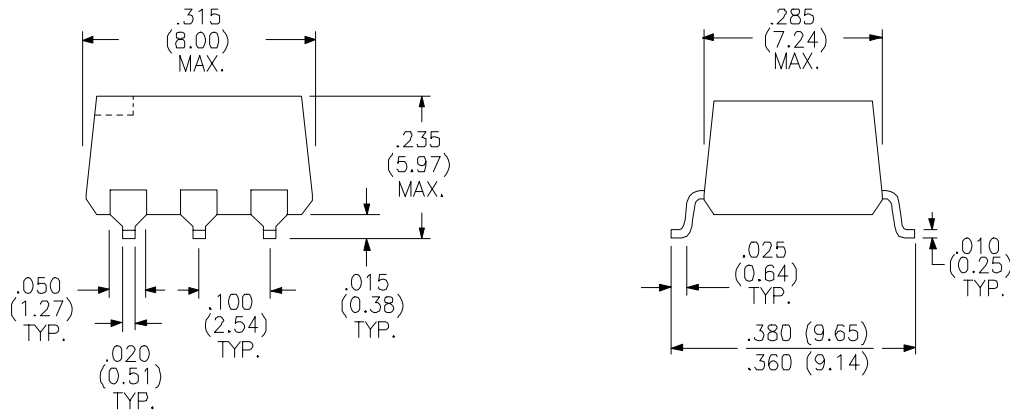


WIDEBAND TRANSFORMER

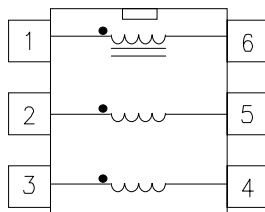
Turns Ratio (± 2%)	1:1:1
----------------------	-------

PARAMETER	MIN.	MAX.	UNITS
Inductance	1.8		MHy
Leakage Inductance		0.6	μHy
Capacitance (C _{ww})		45	pF
Primary DC Resistance		1.0	ohms
Secondary DC Resistance		1.0	ohms
Tertiary DC Resistance		1.0	ohms
Return Loss 51 to 102 KHz	6.0		dB
102 to 3072KHz	8.0		dB
Hipot	1500		V _{RMS}

PHYSICAL DIMENSIONS All dimensions in inches (mm):



SCHEMATIC DIAGRAM:



RHOMBUS INDUSTRIES INC.
FSCM NO. 16714

RHOMBUS P/N: **T-918**

CUST P/N:

NAME:

DATE: **12/6/95**

SHEET: 1 OF 1