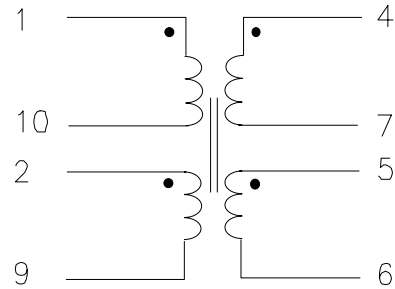


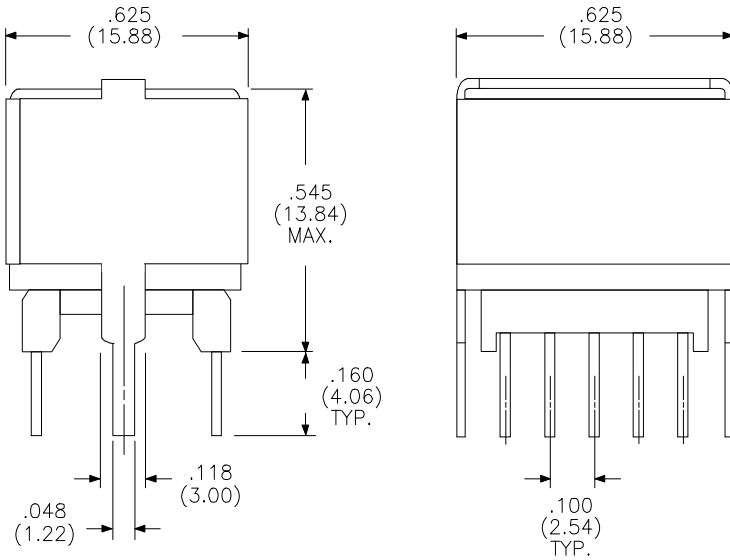
PARAMETER		UNITS
TURNS RATIO 1:1:1:1 ±1% Pins 1-10 : 2-9 : 4-7 : 5-6		
<sup>1</sup> Inductance ±10%	3.025	mH
<sup>2</sup> Leakage Inductance	10 max.	μH
DCR Pins 1 - 10	1.9 max.	Ω
DCR Pins 2 - 9	1.9 max.	Ω
DCR Pins 4 - 7	1.9 max.	Ω
DCR Pins 5 - 6	1.9 max.	Ω
Isolation (Any winding to any winding)	1000	V <sub>RMS</sub>

# HDSL Line Interface Transformer

Schematic Diagram

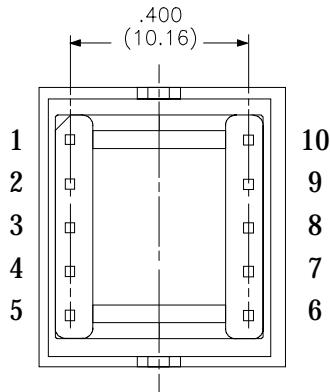


- 1) Tested @ 1 kHz and 1 V (Pins 1-9 short 2-10)
  - 2) Tested @ 10 kHz 100 mA AC (Pins 1-9 short 2-10 & 4-5-6-7)
- Tested on a Wayne Kerr 3245



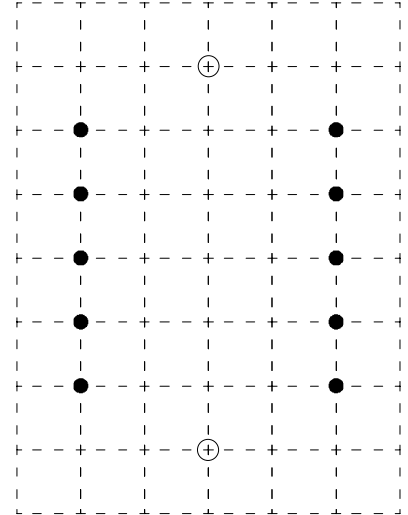
Pin Diameter is 0.025 (0.64)

Physical Dimensions  
inches (mm)



PIN POSITION GRID 0.100 (2.54)

- HOLES FOR BOBBIN PINS
- HOLES FOR CLIPS



Rhombus P/N: <b>T-911</b>	
Cust. P/N:	Name:
Date: <b>2/28/96</b>	Sheet: <b>1 of 1</b>