

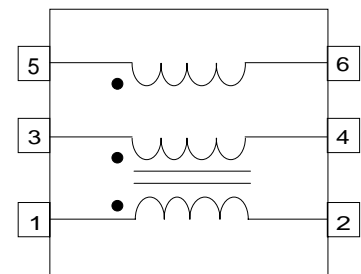
SCR Trigger & Control Transformer

Turns Ratio (± 5 %)	1:1:1
-----------------------	-------

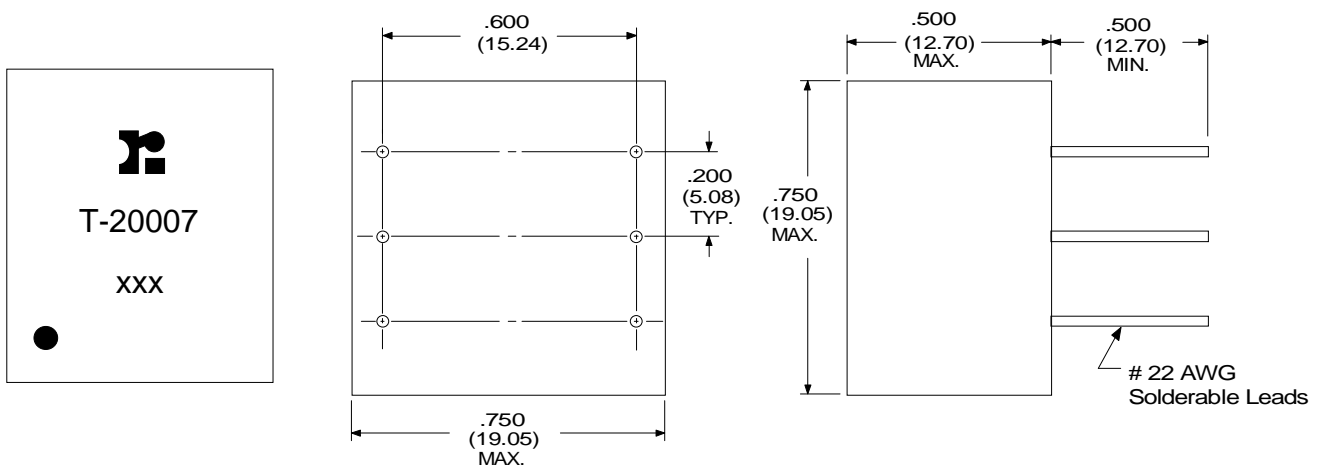
PARAMETER	MIN	MAX	UNITS
Inductance	1.0		mH
Leakage Inductance		12	μH
Capacitance (C _{ww})		36	pF
E-T Product	360		V - μs
Primary DC Resistance		2.8	ohms
Secondary DC Resistance		3.6	ohms
Hi-pot	1600		V _{RMS}

Temperature Characteristics:
 ± 15% over -55° C to +55° C
 & 1 mH min.

Schematic Diagram



PHYSICAL DIMENSIONS inches (mm)



RHOMBUS P/N: T-20007

CUST P/N:

NAME:

DATE: 07/22/01

SHEET: 1 of 1