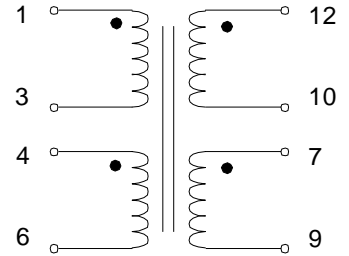


Push-Pull Transformer

Turns Ratio :		1 : 0.10 : 0.15 (1-6):(7-9):(12-10)		
PARAMETER @25°C	MIN.	TYP.	MAX.	UNITS
Inductance (1-6) ¹		82		μH
DCR (1-6) ¹		34		mΩ
DCR (7-9)		4.5		mΩ
DCR (12-10)		7.3		mΩ
Hipot	1500			VDC

SCHEMATIC



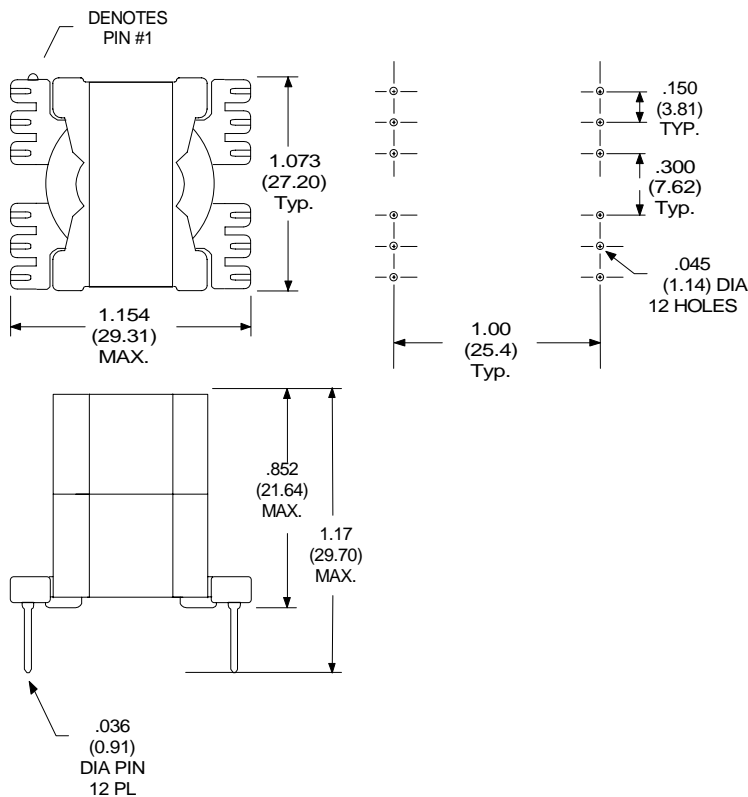
1.. Pins 1-6 with 2,4 shorted

All dimensions in inches (mm):

Primary Current (1-6) = 6A Max.

Secondary #1 (7-9) = 7A Max.

Secondary #2 (12-10) = 6A max.



RHOMBUS P/N: T-1386

CUST P/N:

NAME:

DATE: 11/6/00

SHEET: 1 of 1