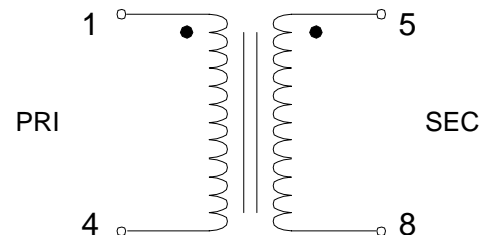


PARAMETER		UNITS
Power Rating	2.4	VA
Secondary Rating With Load (pins 5-8) (Input 120V Primary @60 Hz)	12.0 ± 5% 200	V mA
Efficiency	85 %	Typ.
DCR Primary (pins 1-4)	330 Typ.	Ω
DCR Secondary (pins 5-8)	5.8 Typ.	Ω
Isolation 1,4 to 5,8	4000 min.	V _{RMS}

T-1324

EI PC Power Transformer

Schematic Diagram

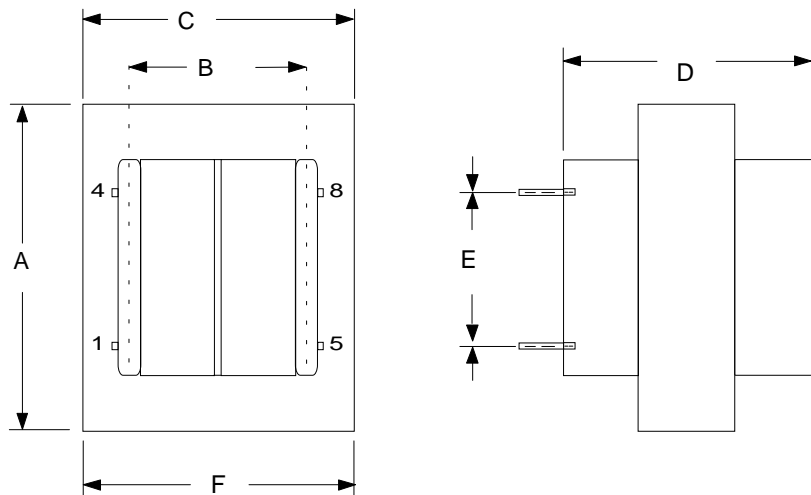


Manufactured with UL Listed materials.

Split Bobbin Construction, Non-Concentric Winding Eliminates the need for Electrostatic Shielding.

Center Flange Insulation Barrier provides High Insulation and low capacitive coupling, thereby minimizing line noise and false triggering.

Physical Dimensions
inches (mm)



Lead Length .200" typ.

Size (VA)	Dimensions in Inches				
	A	B	C	D	E
2.4	1.375	1.187	1.125	1.87	0.7505

12/3/99