

POWER LINE CHOKE

(DRUM CORE STYLE)

Electrical Specifications at 25°C

Parameter	Min.	Typ.	Max.	Units
Inductance ¹	40	50	60	mH
I _{MAX} ²		1.3		A
DCR		4.3		Ω
Lead Diameter		.0226 (0.57)		inches (mm)

Applications

Power Amplifiers

Filters Power Supplies

SCR and Triac Controls

Speaker Crossover Networks

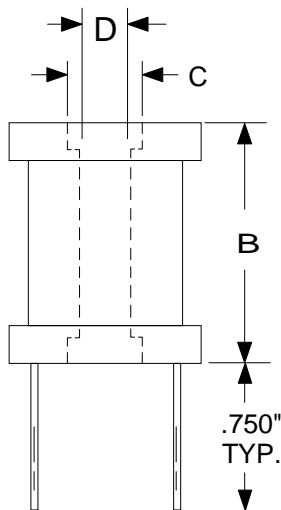
RFI Suppression

Operating temperature Range
-45°C to +85°C

Test Conditions:

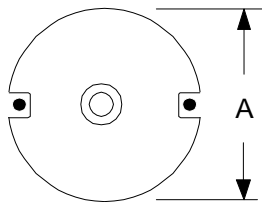
1. Inductance tested at 100 mV_{RMS} and 1 kHz (No DC Bias On)
2. Current for 10% drop in Inductance.

Dimensions in inches



Dim.	inches
A	1.770
B	1.380
C	0.360
D	0.270

High Saturation
Pre-Tinned Leads
Center hole for mechanical mounting



Leads are .022 (#23 AWG)
Leads tinned to within 1/8" of body.

RHOMBUS P/N: **L-732**

CUST P/N:

NAME:

DATE: **11/16/01**

SHEET: