

POWER LINE CHOKE

(DRUM CORE STYLE)

Electrical Specifications at 25°C

Parameter	Min.	Typ.	Max.	Units
Inductance		680		μH
I _{MAX} 1			2.6	A
I _{MAX} 2			0.8	A
DCR		0.54		Ω
Lead Diameter		.0159 (0.40)		inches (mm)

Applications

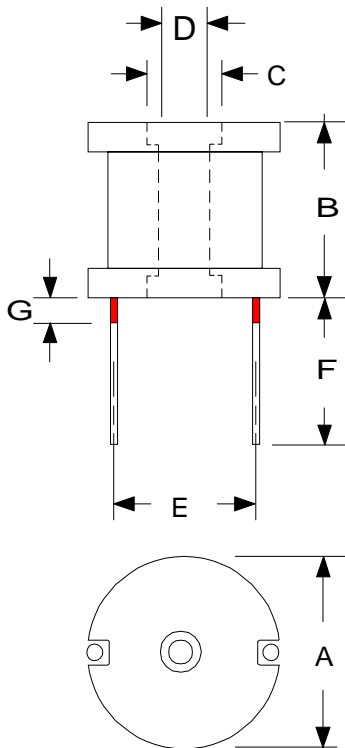
Power Amplifiers
 Filters Power Supplies
 SCR and Triac Controls
 Speaker Crossover Networks
 RFI Suppression

Test Conditions:

Inductance tested at 100 mV_{RMS} and 1 kHz

1. Current for 5% drop in Inductance
2. Current limited by the gauge wire in the winding

All dimensions in inches



Dim.	inches
A	0.560
B	0.810
C	0.187
D	0.126
E	0.480
F	0.750
G	0.062

High Saturation
 Pre-Tinned Leads
 Center hole for mechanical mounting

Leads are .0159(#26 AWG)
 Leads tinned to within 1/16" of body.

RHOMBUS P/N: L-678	
CUST P/N:	NAME:
DATE: 03/07/01	SHEET: 1 OF 1