

Radial Lead Mini Inductor

HIGH CURRENT PER VOLUME

Compatible with **Motorola MC33363** Filter Choke requirements.

Electrical Specifications at 25°C

Part Number	L ⁽¹⁾ ± 10% (μH)	DCR Max. (mΩ)	I ⁽²⁾ Max. (A _{DC})
L-674	5.0	11	2.7

1. Tested at 100 kHz & .1 V_{RMS}
2. Continuous Current Rating
Saturation occurs at 5 Amps DC

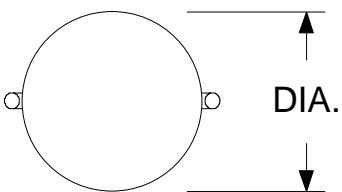
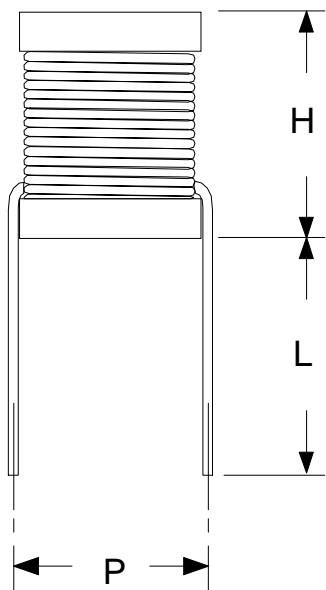
Applications

Power Supplies
Filters
SCR and Triac Controls
OEM Equipment
Telephones
TV, CRT'S, VCR'S
Appliances

Coils finished with UL rated varnish.

Variations on electrical parameters of parts listed are available - Please contact factory.

Pre-Tinned Leads



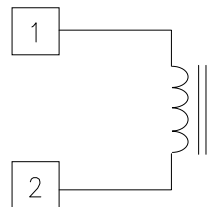
Height dimensions are without solder joint or coatings

LEADS ARE #20 AWG

Physical Dimensions inches (mm)

Reference Dimensions in Inches(mm)			
H	DIA.	P	L
.48 (12.2)	.40 (10.2)	.25 (6.4)	.79 (20.0)

Schematic Diagram



RHOMBUS P/N: L-674

CUST P/N:

NAME:

DATE: 02/05/99

SHEET: 1 OF 1