

Mini Drum Inductors

HIGH CURRENT PER VOLUME

Designed for Noise, Spike & Filtering applications.

Applications

Power Supplies

Filters

SCR and Triac Controls

OEM Equipment

Telephones

TV, CRT'S, VCR'S

Appliances

Electrical Specifications at 25°C

Part Number	L ⁽¹⁾	DCR	I
	± 20% (μH)	Nom. (mΩ)	Max. (A)
L-503	4.3	4.4	6.0

1. Tested at 100 kHz & 1 V_{RMS}

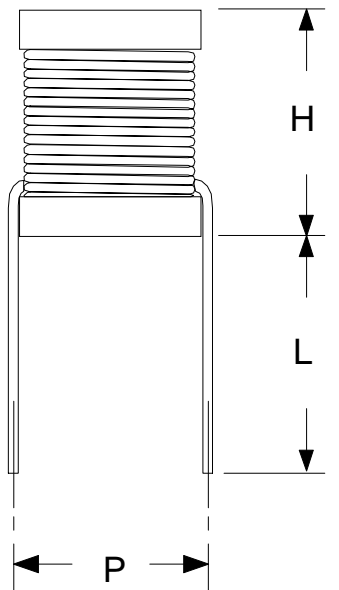
Coils finished with UL rated varnish.

Variations on electrical parameters of parts listed are available - Please contact factory.

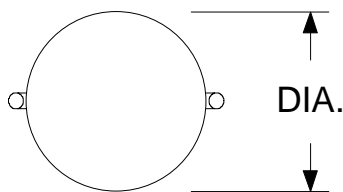
Pre-Tinned Leads

(up to bottom of core)

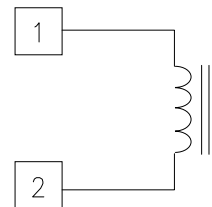
Physical Dimensions inches (mm)



Reference Dimensions in Inches (mm)			
H	DIA.	P	L
.59 (15.0)	.49 (12.4)	.40 (10.1)	.75 (19.0)



Schematic Diagram



Height dimensions are without solder joint or coatings

LEADS ARE #18 AWG

RHOMBUS P/N: L-503	
CUST P/N:	NAME:
DATE: 3/15/01	SHEET: 1 OF 1