

POWER LINE CHOKE

(DRUM CORE STYLE)

PARAMETER	MIN	MAX	UNITS
*Inductance	286.2	349.8	μH
DC Current		6	A
DCR		.085	Ω
Isolation (Winding to Core)	300		V_{RMS}

Applications

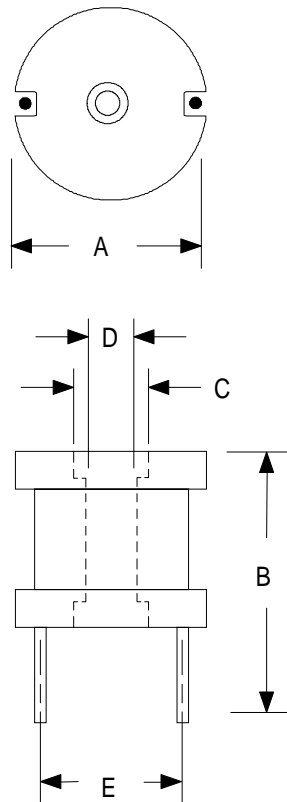
Power Amplifiers
 Filters Power Supplies
 SCR and Triac Controls
 Speaker Crossover Networks
 RFI Suppression

Test Conditions:

Inductance tested at 100 mV_{RMS} and 1 kHz

*Inductance $\pm 3\%$ variation from 500 mA to 6 A

PHYSICAL DIMENSIONS All dimensions in inches



Dim.	inches
A	1.500
B	1.040
C	0.320
D	0.275
E	1.140

High Saturation
 Pre-Tinned Leads
 Center hole for mechanical mounting
 Coils finished with Polyolefin Shrink Tube

Leads are .053 (#16 AWG)
 Leads tinned to within 1/8" of body.

RHOMBUS INDUSTRIES INC.

FSCM NO. 16714

RHOMBUS P/N: L-352

CUST P/N:

NAME:

DATE: 10/28/96

SHEET: 1 OF 1