

# POWER LINE CHOKE

## (DRUM CORE STYLE)

Electrical Specifications at 25°C

Parameter	Min.	Typ.	Max.	Units
Inductance	1360	1700	2040	μH
$I_{MAX}^1$		7.6		A
DCR		148		mΩ
Lead Diameter		.050 (1.27)		inches (mm)

### Applications

Power Amplifiers  
 Filters Power Supplies  
 SCR and Triac Controls  
 Speaker Crossover Networks  
 RFI Suppression

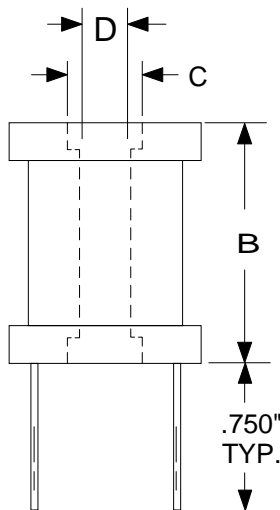
Operating temperature Range  
 -45°C to +85°C

#### Test Conditions:

Inductance tested at 100 mV<sub>RMS</sub> and 1 kHz

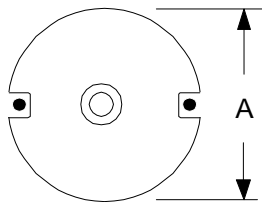
1. Current for 10% drop in Inductance

PHYSICAL DIMENSIONS All dimensions in inches



Dim.	inches
A	0.560
B	0.810
C	0.187
D	0.126

High Saturation  
 Pre-Tinned Leads  
 Center hole for mechanical mounting



Leads are .050 (#16 AWG)  
 Leads tinned to within 1/8" of body.

RHOMBUS P/N: L-12597	
CUST P/N:	NAME:
DATE: 1/21/99	SHEET: