

POWER LINE CHOKE

(DRUM CORE STYLE)

Electrical Specifications at 25°C

Parameter	Min.	Typ.	Max.	Units
Inductance		680		μH
I_{MAX}^1			6.0	A
DCR		144		mΩ
Lead Diameter		.036 (0.914)		inches (mm)

Applications

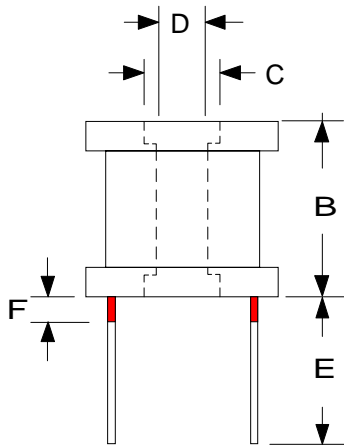
Power Amplifiers
 Filters Power Supplies
 SCR and Triac Controls
 Speaker Crossover Networks
 RFI Suppression

Test Conditions:

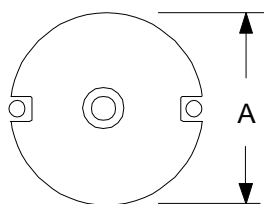
Inductance tested at 100 mV_{RMS} and 1 kHz

1. Current for 10% drop in Inductance

PHYSICAL DIMENSIONS All dimensions in inches



Dim.	inches
A	0.955
B	0.975
C	0.187
D	0.126
E	0.750
F	0.063



High Saturation
 Pre-Tinned Leads
 Center hole for mechanical mounting

Leads are .036 (#19 AWG)
 Leads tinned to within 1/16" of body.

RHOMBUS P/N: L-12248	
CUST P/N:	NAME:
DATE: 10/10/00	SHEET: 1 OF 1