

POWER LINE CHOKE (DRUM CORE STYLE)

Electrical Specifications at 25°C

Parameter	Min.	Typ.	Max.	Units
Inductance	704	880	1056	μH
I_{MAX}^1		5.4		A
DCR		200		mΩ
Lead Diameter		.0320 (0.812)		inches (mm)

Applications

Power Amplifiers

Filters Power Supplies

SCR and Triac Controls

Speaker Crossover Networks

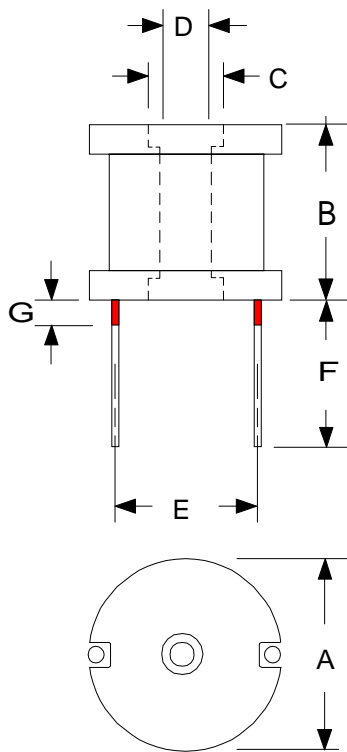
RFI Suppression

Test Conditions:

Inductance tested at 100 mV_{RMS} and 1 kHz

1. Current for 10% drop in Inductance

Dimensions in inches



Dim.	inches
A	0.955
B	0.975
C	0.187
D	0.126
E	0.760
F	0.750
G	0.060

High Saturation

Pre-Tinned Leads

Center hole for mechanical mounting

Leads are .0320 (#20 AWG)

RHOMBUS P/N: **L-12247**

CUST P/N:

NAME:

DATE: **10/19/01**

SHEET: 1 OF 1